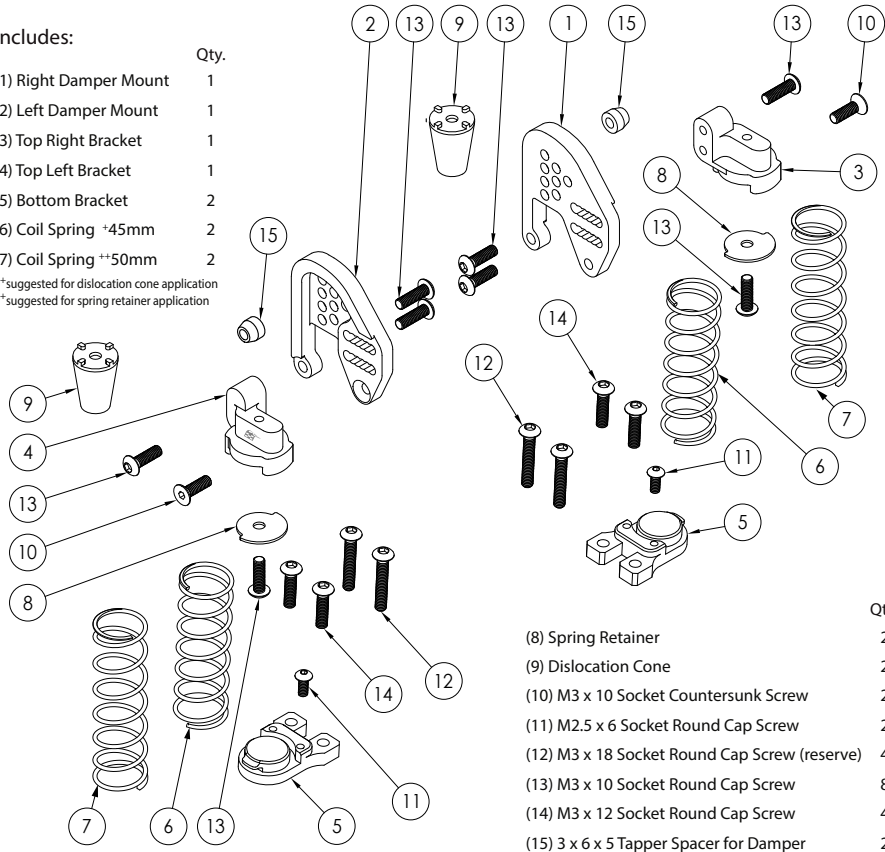


EXPLODED VIEW

Includes:

	Qty.
(1) Right Damper Mount	1
(2) Left Damper Mount	1
(3) Top Right Bracket	1
(4) Top Left Bracket	1
(5) Bottom Bracket	2
(6) Coil Spring +45mm	2
(7) Coil Spring ++50mm	2

*suggested for dislocation cone application
 **suggested for spring retainer application



Enjoy Being A BADASS

We love building scale models. Let's be honest. Which badass doesn't love a beautiful looking car? Our focus is on designing the best looking products that really perform; products that withstand beating and still look great enough to be shelf queens. Offering you the latest designs made with the highest possible quality at affordable prices is our absolute focus for all enthusiastic hobbyists.

Since 2012, Boom Racing has been manufacturing extreme performance RC products. We want you to love and enjoy these amazing "scale" and "performance" based products to create your own unique realistic RC builds.

We are never going to stop at giving you the best updates and upgrades on our product lines. That's our passion and our commitment to keep you on your toes with excitement and anticipation for what's to come next.

Enjoy being a badass!



Rear Scale Suspension Conversion Kit For Defender D90/D110 Chassis

#BRQ763071



BRQ763071

Compatible Chassis

D90	D110
#BRQ90345	#BRD110COMBO1
#BRQ90348	#BRD110COMBO2
#BRQD90	#BR069D90V2
#BRQD90V2	#BRQ90348D110W
#BR230D90W	#BRQ90348D110PU
#BR308D90PU	#TRC/302276
#BRQD90KIT	
#BRQD90KIT/PU	
#TRC/302275	



#boomracing



www.facebook.com/
boomracingrc

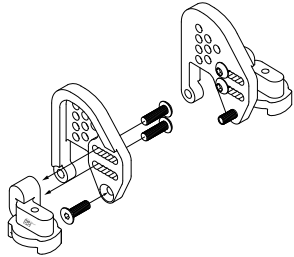
WWW.BOOMRACINGRC.COM

Copyright BoomRacing Co. Ltd.

ENJOY BEING A BADASS

Rear Scale Suspension Conversion Kit For Defender D90/D110 Chassis Installation Manual

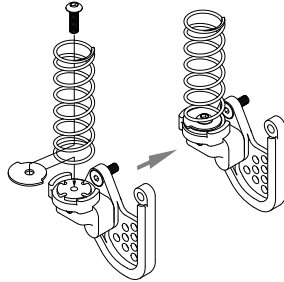
Place one countersunk screw onto the damper mount. Install the upper bracket with two bolts as shown below.



STEP 1

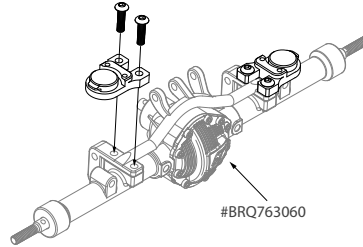
SPRING RETAINER OPTION:

Position the spring onto the upper bracket and secure the retainer with screw.



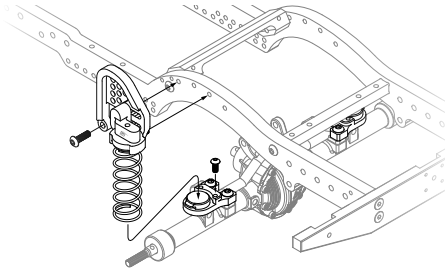
STEP 2

Install the bottom bracket onto the axle housing as shown.



STEP 3

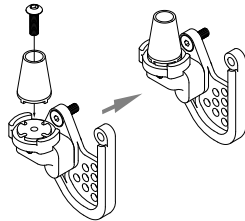
Install the damper mount onto the chassis rail with two bolts. Place the spring onto the bottom bracket. Use one M2.5 screw to fasten the spring.



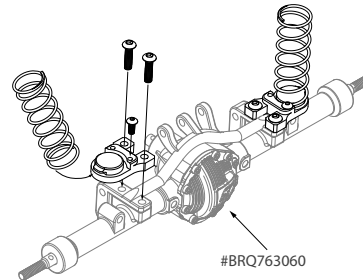
STEP 4

DISLOCATION CONE OPTION:

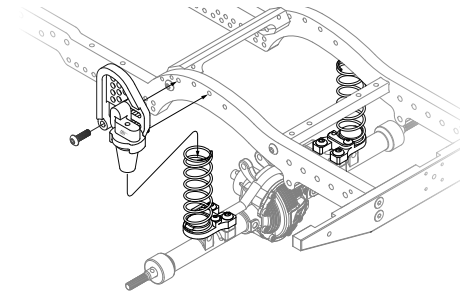
Secure the dislocation cone onto the upper bracket.



Install the bottom bracket onto the axle housing as shown. Place the spring onto the bottom bracket. Use one M2.5 screw to fasten the spring.



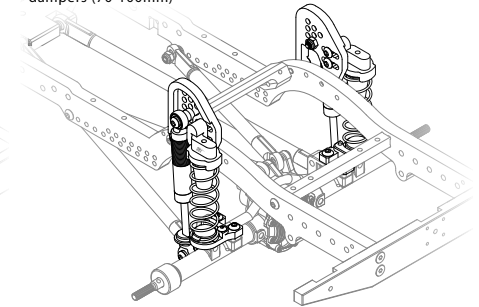
Install the damper mount onto the chassis rail with two bolts. Place the dislocation cone inside the spring.



FINAL ASSEMBLY

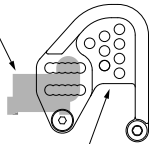
Remove coil spring, preload ring and retainer from damper*. Install damper onto the mounts as shown.

*Dampers not provided - your choice to use stock/aftermarket dampers (70-100mm)



Hints

Align the upper bracket and the axle housing with minimum coil spring distortion



Adjustable mounting positions for different damper lengths